



# 2016 Catalogue

 **major  
science**

*Innovative Life Sciences Tools*

## Dry Bath Incubator

# Mini Heating Dry Bath Incubator

## MD-MINI

The MS Mini Dry Bath incorporates innovative ideas of compactness, performance and versatility. This palm-sized yet powerful device is designed to maximize benchtop space and enhance research productivity with ultra-precise temperature control. The interchangeable ability of heating blocks in various size permits accommodation of versatile tube sizes. Moreover, turn it into a water bath or bead bath with optional metallic thermal beads.



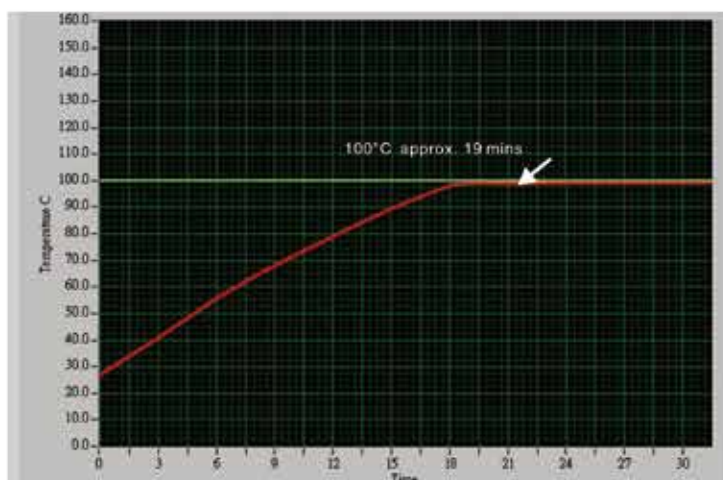
Clear block cover ensures temperature uniformity

### Features

- Small size, fits in your palm
- User temperature calibration
- Single molded chamber, no cracks or welds
- PTFE coated chamber resists stains
- Can be used as a mini water bath or bead bath
- Outstanding heating rate
- Different sizes of heating block available for selection
- Clear cover to ensure temperature uniformity
- Optional in-car power adaptor provides portability on the road



FCCE  
MD-MINI



■ Temp. set value: 100°C  
 ■ Initial temp. value: 28°C  
 Block model: MD-MINI-B02  
 Process time: Approx. 19mins (with lid)



## Specifications

Cat. No.	MD-MINI
Display	LED
Power	50W
Dimension	(WxLxH) 6.02"x4.92"x3.82" (153x125x97mm)
Controller	Digital microprocess controller
Heating chamber	Molded waterproof aluminum alloy coated with PTFE
Temperature control range	5°C above ambient to 100°C
Temperature increment	0.1°C
Temperature uniformity at 37°C	± 0.20°C
Temperature accuracy at 37°C	± 0.25°C
Temperature calibration	Yes
Timer	9999 (min) / Continuous
Safety	Leak proof heating chamber
	Over temperature protection
Operating temperature	Ambient to 40°C
Special feature	Used as water bath or bead bath
Block material	Aluminum alloy
Block type	Standard and customized type are available
Rated voltage	100V-240V
Weight	Approx. 1.3lb (0.6kg)
Blocks	
Block material	Aluminum alloy
Dimension	(WxLxH) 1.85"x2.80"x1.26" (47x71x32mm) or 1.85"x2.80"x2.95" (47x71x75mm)
Block lifter well	Yes
Thermometer well	Yes

## Ordering Information

Cat. No.	Product Description
MD-MINI	Mini Heating Dry Bath Incubator; without block

## Accessories

Cat. No.	Product Description
MD-MINI-B01	For 0.2ml tube (PCR strip tube), 32 wells, $\phi$ 6.35mm, depth 19mm, (WxLxH) 47x71x32mm
MD-MINI-B02	For 1.5ml tube, 12 wells, $\phi$ 10.8mm, depth 28.5mm, (WxLxH) 47x71x32mm
MD-MINI-B03	For 15ml tube, 6 wells, $\phi$ 17.3mm, depth 70mm, (WxLxH) 47x71x75mm
MD-MINI-B04	For 50ml tube, 2 wells, $\phi$ 29.2mm, depth 72mm, (WxLxH) 47x71x75mm
MD-MINI-B05	For 0.5ml tube, 12 wells, $\phi$ 8.0mm, depth 25mm, (WxLxH) 47x71x32mm
MD-MINI-B06	For 2.0ml or 1.5ml tube, 12 wells, $\phi$ 11.0mm, depth 30mm, (WxLxH) 47x71x32mm
MD-MINI-B07	For 1.5ml tube, 12 wells, $\phi$ 10.9mm, depth 30mm, (WxLxH) 47x71x32mm
MS-BL95-E	Block Lifter, 95mm length, with E-type retaining rings
MD-MINI-LID	MD-MINI lid, (WxLxH) 83x58.5x31.5mm
MD-MINI-CAR-ADAPTER	Car adapter for MD-MINI and MC-02 series, 1.5M

\*For more information please refer to [P104-107](#)



MD-MINI-LID



MD-MINI-CAR-ADAPTER



# Mini Cooling Dry Bath Incubator

## MC-02 series

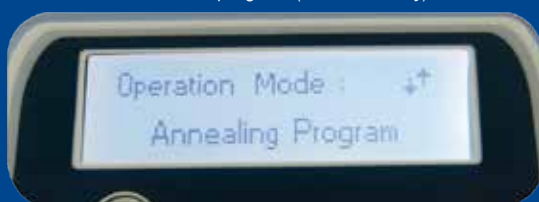
The product line Mini Cooling Dry Bath Incubator is the mini-series of our ultimate dry bath. It is designed to meet the requirement of accurate temperature control, ease of data transferring and programming, small foot print and ease of use. Experience the exceptional heating/cooling rate with quick start feature and the portability to work your sample on the road! Perfect instrument can be used in QC process such as in food industry.



Can be used as a bead bath



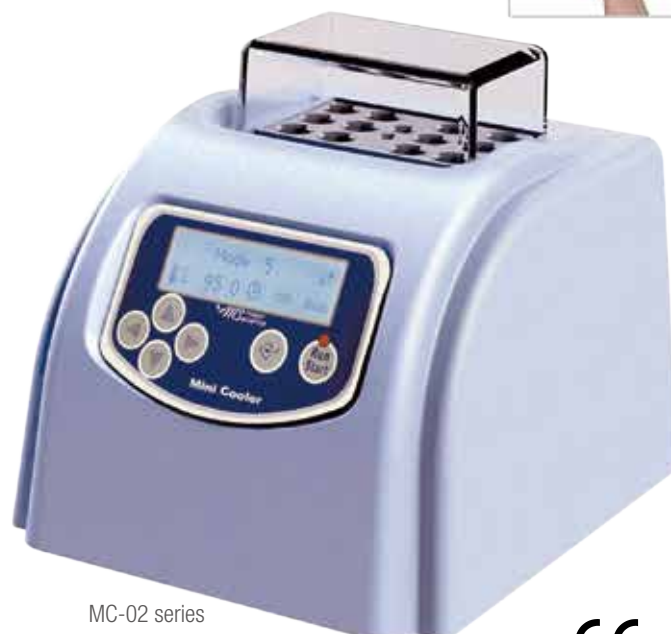
Quick start program (MC-0203 only)



Annealing program (MC-0203 only)

### Features

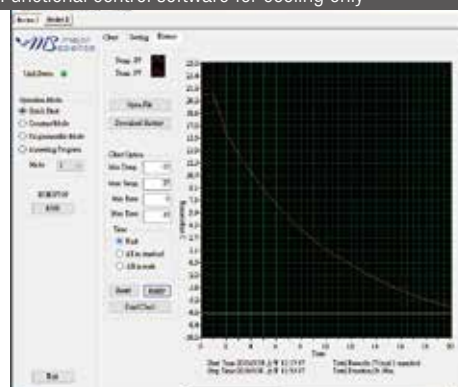
- Small size, fits in your palm
- User temperature calibration
- Single molded chamber, no cracks or welds
- PTFE coated chamber resists stains
- Can be used as a mini water bath or bead bath
- Outstanding heating rate
- Different sizes of aluminum alloy block available for selection
- Clear cover to ensure temperature uniformity
- Quick start program (only MC-0203)
- Annealing program (only MC-0203)
- Optional in car power adaptor provides portability on the road



MC-02 series



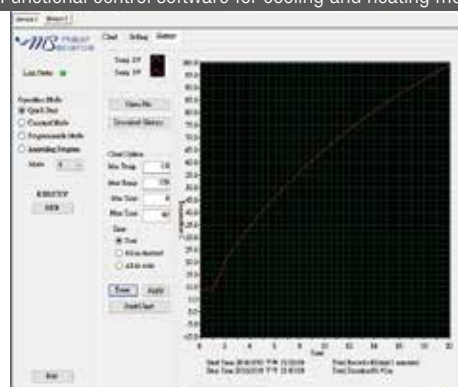
### Functional control software for cooling only



### MC-0201/ MC-0203

- Temp. set value: -6°C
- Initial temp. value: 20.6°C
- Block type: MD-MINI-B02
- Process time: Approx. 20mins

### Functional control software for cooling and heating models



### MC-0203

- Temp. set value: 100°C
- Initial temp. value: 9°C
- Block type: MD-MINI-B02
- Process time: Approx. 20mins

with block

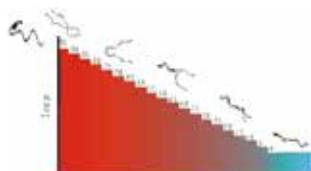


with water



with beads





## Annealing Program

Initial Temp.	95.0
Descending Temp.	5.0
Holding Time.	5
Final Temp.	4.0



As a water bath

## Specifications

Cat. No.	MC-0201	MC-0203
Display	LCD	
Power	max. 60W	
Dimension	(WxLxH) 5.31"x5.98"x7.28" (135x152x185mm) (excluding lid)	
Controller	High performance 32 bits microprocessor	
Heating /Cooling chamber	Molded waterproof aluminum alloy coated with PTFE	
Temperature control range	30°C below ambient temperature (minimum -10°C) to 20°C	30°C below ambient temperature (minimum -10°C) to 100°C
Temperature increment	0.1°C	
Temperature uniformity at 37°C	± 0.2°C	
Temperature accuracy at 37°C	± 0.25°C	
Temperature calibration	Yes	
Heating rate	N/A	Max. 5°C per min
Cooling rate	Max. 4°C per min	
Timer	9999 (min)	
Cooling/ Heating parts	Peltier	Peltier / Heating element
Operation mode	Constant operation: constant temperature (-10°C to 20°C);	Constant operation: constant temperature (-10°C to 100°C);
	N / A	Program operation: 1-4 steps and up to 9 cycles
	N / A	Annealing program
	N / A	Quick start program: 4°C, 16°C, 37°C, 56°C, 95°C pre-set
Safety	Leak proof heating chamber	
Operating temperature	Ambient to 40°C	
Special feature	Can be used as water bath or bead bath incubator	
Block material	Aluminum alloy	
Block type	Standard (MD-MINI) and customization upon request	
PC Connection	USB	
Weight	Approx. 2.9lb (1.3kg)	

## Ordering Information

Cat. No.	Product Description
MC-0201	Mini Cooling Dry Bath Incubator, 200 series, cooling only, without block
MC-0203	Mini Cooling Dry Bath Incubator, 200 series, programmable cooling and heating; without block

## Accessories

Cat. No.	Product Description
MC-0200-SW	Functional control software for Mini cooling Incubator series, including a USB cable
MD-MINI-B01	For 0.2ml tube (PCR strip tube), 32 wells, $\phi$ 6.35mm, depth 19mm, (WxLxH) 47x71x32mm
MD-MINI-B02	For 1.5ml tube, 12 wells, $\phi$ 10.8mm, depth 28.5mm, (WxLxH) 47x71x32mm
MD-MINI-B03	For 15ml tube, 6 wells, $\phi$ 17.3mm, depth 70mm, (WxLxH) 47x71x75mm
MD-MINI-B04	For 50ml tube, 2 wells, $\phi$ 29.2mm, depth 72mm, (WxLxH) 47x71x75mm
MD-MINI-B05	For 0.5ml tube, 12 wells, $\phi$ 8.0mm, depth 25mm, (WxLxH) 47x71x32mm
MD-MINI-B06	For 2.0ml or 1.5ml tube, 12 wells, $\phi$ 11.0mm, depth 30mm, (WxLxH) 47x71x32mm
MD-MINI-B07	For 1.5ml tube, 12 wells, $\phi$ 10.9mm, depth 30mm, (WxLxH) 47x71x32mm
MS-BL95-E	Block Lifter, 95mm length, with E-type retaining rings
MD-MINI-LID	MD-MINI lid, (WxLxH) 83x58.5x31.5mm
MD-MINI-CAR-ADAPTER	Car adapter for MD-MINI and MC-02 series, 1.5M

\*For more information please refer to [P104-107](#)



MD-MINI-LID



MD-MINI-CAR-ADAPTER

# Genius Dry Bath Incubator

## MD series

The Genius Dry Bath Incubators come in either single or dual block models, along with a complete set of interchangeable blocks. It is designed for a variety of applications, including restriction digest, denaturing DNA melting agar, coagulation studies, hybridization and hot start thermo-cycled reaction. The microprocessor controller offers highly accurate temperature control, rapid heating and excellent stability. The temperature can be set in increments of 0.1°C from 5°C above ambient to 150°C. An optional temperature probe is available to place directly in samples. A timer can be set from 1- 999mins. The MD series can be used as a mini water bath or bead bath. Optional Function Control software allows the dry bath incubator to perform real-time data recording through a PC.



Can be used as a water bath

### Features

- Digital microprocessor offers precise performance control
- Highly accurate temperature control and broad control range
- Rapid heating rate
- Digital LED display & timer
- User temperature calibration
- Molded aluminum alloy chamber
- Function control software available



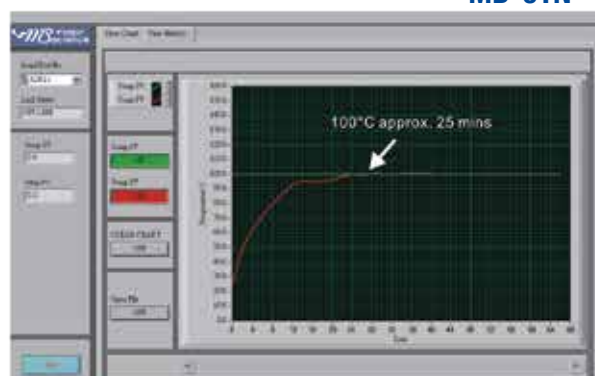
MD-01N



MD-02N

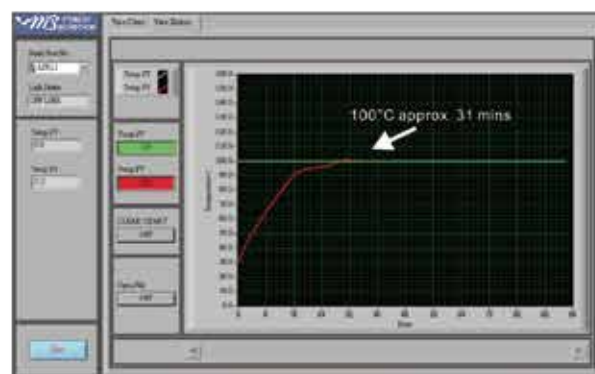


MD-01N



- Temp. set value: 100°C
- Initial temp. value: 25°C
- Block model: MD-B1.5
- Process time: Approx. 25mins

MD-02N



- Temp. set value: 100°C
- Initial temp. value: 30°C
- Block model: MD-B1.5
- Process time: Approx. 31mins

## Specifications



with beads



with water



with block



MD-01N / MD-02N  
with MD-P01



MD-P01

Cat. No.	MD-01N (Single Block)	MD-02N (Dual Block)
Display	LED	
Power	125W	200W
Dimension	(WxLxH) 7.87"x11.73"x3.15" (200x298x80mm)	
Controller	Digital microprocess controller	
Heating chamber	Molded Waterproof aluminum alloy coated with PTFE	
Temperature control range	5°C above ambient to 150°C	
Temperature increment	0.1°C	
Temperature uniformity at 37°C	±0.2°C	
Temperature accuracy at 37°C	±0.2°C	
Temperature calibration	Yes	
Timer	999 (min) / Continuous	
Safety	Leak proof heating chamber	
	Over temperature protection	
	SSR failure detection	
Operating temperature	Ambient to 40°C	
Special feature	Can be used as water bath or bead bath incubator	
Block material	Aluminum alloy	
Block type	Standard and customized types are available	
PC Connection	RS232	
Rated voltage	110V / 220V	
Weight	Approx. 4.6lb (2.1kg)	Approx. 6.2lb (2.8kg)
<b>Blocks</b>		
Block material	Aluminum alloy	
Dimension	(WxLxH) 3.11"x4.09"x1.97" (79x104x50mm)	
Block lifter well	Yes	
Thermometer well	Yes (except microplate blocks)	

## Ordering Information

Cat. No.	Product Description
MD-01N-110/220	Genius Dry Bath Incubator (One block unit); without block
MD-02N-110/220	Genius Dry Bath Incubator (Dual block unit); without block
MD-P01	Thermocouple
MD-RS232	RS 232 cable
MD-PCSW	Function control software package
MD-PCSW-R	Function control software package; including a RS232 cable

## Accessories

Cat. No.	Product Description
MD-MP01-S	For microplate; titerplate (Plain Block for Single Block unit only)
MD-MP01-D	For microplate; titerplate (Dual Block unit only)
MD-MP02-S	For 96 wells deep microplate or PCR plate ( for Single Block unit only)
MD-MP02-D	For 96 wells deep microplate or PCR plate ( for Dual Block unit only)
MD-B0.2	For 0.2ml tube, 64 wells (or 0.2ml PCR strip tube for 8 wells x 8)
MD-B0.5	For 0.5ml tube, 20 wells
MD-B1.5	For 1.5ml tube, 20 wells
MD-B0.5+1.5	Combination: for 0.5ml tube, 12 wells; and for 1.5ml tube, 12 wells (on the same side)
MD-B0.5/1.5	One side for 1.5 or 2.0ml tube, 20 wells and another side for 0.5ml tube, 30 wells (on the opposite side)
MD-B13	Well size 13mm, 20 wells
MD-B17	For 15ml centrifuge tube, 12 wells
MD-B20	Well size 20mm, 12 wells
MD-B25	Well size 25mm, 6 wells
MD-B29	For 50ml centrifuge tube, 4 wells

\*For more information please refer to [P104-107](#)



# Elite Dry Bath Incubator

## EL series

The Elite Dry Bath Incubator comes in single or dual block modes along with a comprehensive set of interchangeable blocks. It is designed for a variety of applications, including restriction digest, denaturing DNA, BUN, melting agar, coagulation studies, hybridization and hot start thermo-cycled reaction. Elite Dry Bath is recognized as the finest, fastest heating and smallest foot print dry bath incubator. In addition, the aluminum blocks can be removed for the use of a mini water bath or a bead bath. The temperature setpoint can be set in increments of 0.1°C from 5°C above ambient to 150°C. Optional PC control software allows the dry bath incubator to perform real time data recording through a PC.



Can be used as a bead bath

### Features

- Digital microprocessor controller confers performance and precise control
- Broad temperature control range & guaranteed uniformity
- Excellent heating rate
- Large LCD screen for instant observation
- User temperature calibration
- Can be used as a water bath or bead bath
- Molded aluminum alloy chamber
- Optional PC Control software available

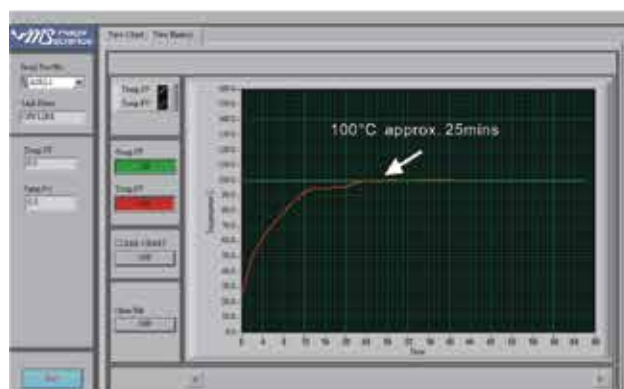


EL-01



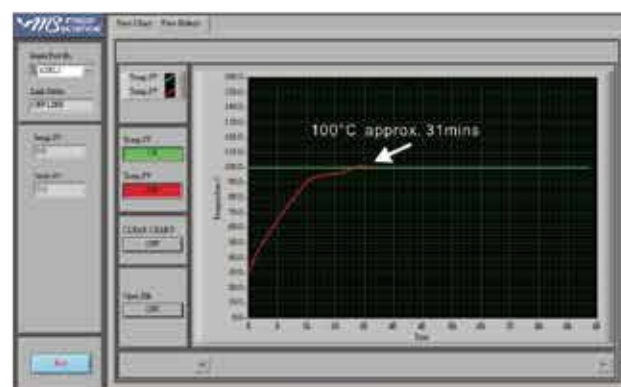
EL-02 

EL-01



- Temp. set value: 100°C
- Initial temp. value: 25°C
- Block model: MD-B1.5
- Process time: Approx. 25mins

EL-02



- Temp. set value: 100°C
- Initial temp. value: 30°C
- Block model: MD-B1.5
- Process time: Approx. 31mins



## Specifications

Cat. No.	EL-01 (Single Block)	EL-02 (Dual Block)
Display	LCD	
Power	125W	200W
Dimension (WxLxH)	5.98"x5.91"x5.31" (152x150x135mm)	5.98"x9.06"x5.31" (152x230x135mm)
Controller	Digital microprocess controller	
Heating chamber	Molded Waterproof aluminum alloy coated with PTFE	
Temperature control range	5°C above ambient to 150°C	
Temperature increment	0.1°C	
Temperature uniformity at 37°C	± 0.2°C	
Temperature accuracy at 37°C	± 0.2°C	
Temperature calibration	Yes	
Timer	99 (hr); 59 (min) / Continuous	
Safety	Leak proof heating chamber	
	Over temperature protection	
	SSR failure detection	
Operating temperature	Ambient to 40°C	
Special feature	Used as water bath or bead bath incubator	
Block material	Aluminum alloy	
Block type	Standard and customized type are available	
PC Connection	RS232	
Rated voltage	110V / 220V	
Weight	Approx. 4.6lb (2.1kg)	Approx. 6.1lb (2.8kg)
<b>Blocks</b>		
Block material	Aluminum alloy	
Dimension	(WxLxH) 3.11"x4.09"x1.97" (79x104x50mm)	
Block lifter well	Yes	
Thermometer well	Yes (except microplate blocks)	



with beads



with water



with block

## Ordering Information

Cat. No.	Product Description
EL-01-110/220	Elite Dry Bath Incubator ( One block unit ); without block
EL-02-110/220	Elite Dry Bath Incubator ( Dual block unit ); without block

## Accessories

Cat. No.	Product Description
MD-RS232	RS 232 cable
MD-PCSW	Function control software package
MD-PCSW-R	Function control software package; including a RS232 cable
MD-MP01-S	For microplate; titerplate (Plain Block for Single Block unit only)
MD-MP01-D	For microplate; titerplate (Dual Block unit only)
MD-MP02-S	For 96 wells deep microplate or PCR plate ( for Single Block unit only)
MD-MP02-D	For 96 wells deep microplate or PCR plate ( for Dual Block unit only)
MD-B0.2	For 0.2ml tube, 64 wells (or 0.2ml PCR strip tube for 8 wells x 8)
MD-B0.5	For 0.5ml tube, 20 wells
MD-B1.5	For 1.5ml tube, 20 wells
MD-B0.5+1.5	Combination: for 0.5ml tube, 12 wells; and for 1.5ml tube, 12 wells (on the same side)
MD-B0.5/1.5	One side for 1.5 or 2.0ml tube, 20 wells and another side for 0.5ml tube, 30 wells (on the opposite side)
MD-B13	Well size 13mm, 20 wells
MD-B17	For 15ml centrifuge tube, 12 wells
MD-B20	Well size 20mm, 12 wells
MD-B25	Well size 25mm, 6 wells
MD-B29	For 50ml centrifuge tube, 4 wells

\*For more information please refer to [P104-107](#)

# Ultimate Dry Bath Incubator

## MC-01 series

Two models of Ultimate Dry Bath Incubator are available with different heating and cooling profiles, along with a broad selection of interchangeable blocks. Both models are designed for a variety of applications including ligation, restriction digest, denaturing DNA, BUN, melting agar, coagulation studies, hybridization and hot start thermo-cycled reaction. The built-in 2.6" LCD screen permit instant viewing and selection of operation modes: constant, programmable and annealing. The microprocessor controller offers performance, precise control as well as rapid heating and cooling efficiency with excellent stability. The temperature can be set in 0.1°C increments, from -10°C to 100°C. Optional PC control software is available for real time data logging.



Can be used as a water bath

### Features

- Digital microprocessor offers performance and precise control
- Broad temperature control range & guaranteed uniformity
- Highly efficient heating & cooling rates
- Large LCD screen for easy selection of operation modes and setting inputs
- User temperature calibration
- Also a mini water bath and bead bath
- Optional PC control software available

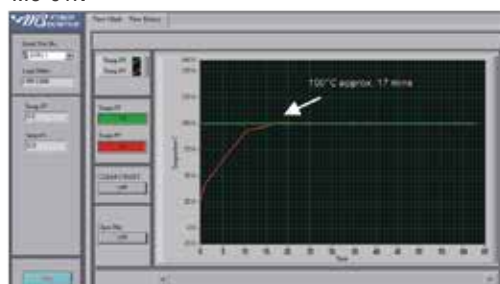


MC-01N

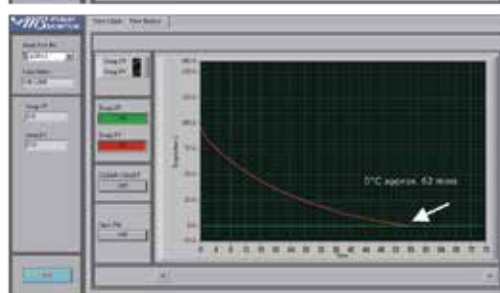
MC-01S



MC-01N

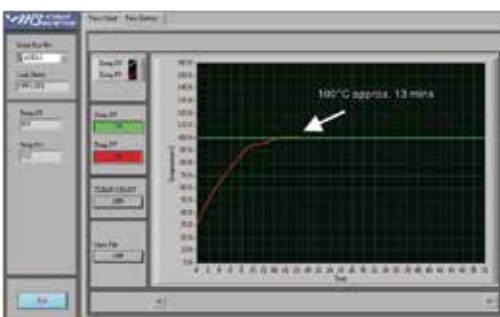


■ Temp. set value: 100°C  
■ Initial temp. value: 25°C  
Block model: MC-B0.2+0.5+1.5  
Process time: Approx. 17mins

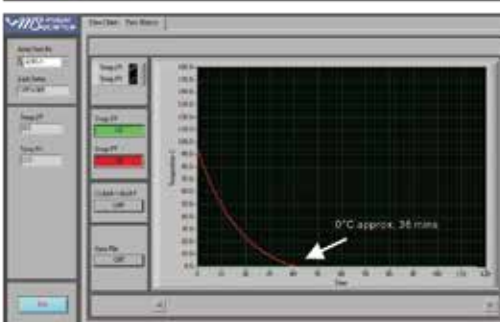


■ Temp. set value: 0°C  
■ Initial temp. value: 100°C  
Block model: MC-B0.2+0.5+1.5  
Process time: Approx. 62mins

MC-01S



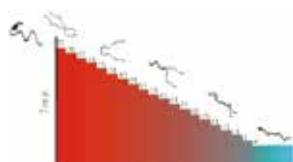
■ Temp. set value: 100°C  
■ Initial temp. value: 28°C  
Block model: MC-BS0.2+0.5  
Process time: Approx. 13mins



■ Temp. set value: 0°C  
■ Initial temp. value: 100°C  
Block model: MC-BS0.2+0.5  
Process time: Approx. 36mins

### Ordering Information

Cat. No.	Product Description
MC-01N-110/220	Ultimate Dry Bath Incubator;without block
MC-01S-110/220	Ultimate plus Dry Bath Incubator;without block
MD-RS232	RS 232 cable
MC-PCSW	Function control software package
MC-PCSW-R	Function control software package; including a RS232 cable



## Annealing Program

Initial Temp.	95.0
Descending Temp.	5.0
Holding Time.	5
Final Temp.	4.0



with water



with beads



with block

## Specifications

Cat. No.	MC-01N	MC-01S
Chamber dimension (WxLxH)	5.11"x3.54"x1.97" (130x90x50mm)	5.11"x3.54"x1.18" (130x90x30mm)
Display	2.6" LCD	
Power	400W	
Dimension	(WxLxH) 7.87"x11.61"x5.51" (200x295x140mm)	
Controller	Digital microprocess controller	
Heating chamber	Molded Waterproof aluminum alloy coated with PTFE	
Temperature control range	30°C below ambient temperature ( minimum -10°C ) to 100°C	
Temperature increment	0.1°C	
Temperature uniformity at 37°C	± 0.2°C	
Temperature accuracy at 37°C	± 0.2°C	
Temperature calibration	Yes	
Operation mode	Constant operation: constant temperature ( -10°C to 100°C ); Timer: 9999 (min)	
	Program operation: 1-4 steps and up to 9 cycles; timer: 9999 (min)	
	Annealing program	
Safety device	Leak proof heating chamber	
Operating temperature	Ambient to 40°C	
Special feature	Can be used as water bath or bead bath incubator	
Block material	Aluminum alloy	
Block type	Standard and customized type are available	
PC Connection	RS232	
Rated voltage	110V / 220V	
Weight	Approx. 17.6lb (8kg)	
Blocks	Ultimate MC Block	Ultimate plus MC Block
Dimension (WxLxH)	3.54"x5.08"x1.81" (90x129x46mm)	3.54"x5.08"x1.18" (90x129x30mm)
Block material	Aluminum alloy	
Block lifter well	Yes	
Thermometer well	Yes ( except microplate blocks )	

## Accessories

Cat. No.	Product Description
MC-MP01	For microplate; titerplate ( Plain Block )
MC-MP02	For 96 wells deep microplate or PCR plate
MC-B0.5	For 0.5ml, 30 wells
MC-B1.5	For 1.5 or 2.0ml, 30 wells
MC-B0.5+1.5	Combination: for 1.5ml or 2.0ml tube, 15 wells and 0.5ml tube, 15 wells (on the same side)
MC-B0.2+0.5+1.5	Combination: 0.2ml tube (or strip tube for 8 wells ), 24 wells; 1.5ml or 2.0ml tube, 10 wells and 0.5ml tube, 10 wells (on the same side)
MC-B13	Well size 13mm, 30 wells
MC-B17	For 15ml centrifuge tube, 15 wells
MC-B20	Well size 20mm, 15 wells
MC-B25	Well size 25mm, 6 wells
MC-B29	For 50ml centrifuge tube, 6 wells
MC-B0.2H	(1/2) half block for 0.2ml tube, 40 wells ( or 0.2ml PCR strip tube for 8 wells x 5)
	One Ultimate Dry Bath Incubator can insert 2ea of half block
MC-B0.5H	(1/2) half block for 0.5ml tube, 15 wells
	One Ultimate Dry Bath Incubator can insert 2ea of half block
MC-B1.5H	(1/2) half block for 1.5 or 2ml tube, 15 wells
	One Ultimate Dry Bath Incubator can insert 2ea of half block
MC-BS0.2+0.5	Combination: 0.2ml tube, 36 wells; 0.5ml, 20 wells
MC-BS0.5+1.5	Combination: 0.5ml tube, 18 wells; 1.5ml, 14 wells

\*For more information please refer to **P104-107**





### **US Office**

19959 Sea Gull Way  
Saratoga, CA 95070 U.S.A.  
T/ +1-408-366-9866  
F/ +1-408-446-1107

### **Taiwan Office**

No. 37, Wuquan 5th Road, Wugu Dist.,  
New Taipei City 24888, Taiwan  
T/ +886-2-2298-1055  
F/ +886-2-2299-7871

### **India Office**

No.12-13-104, St. No.3, Lane No.1,  
Tarnaka, Secunderabad - 500017  
Telengana, India  
T/ +91-40-27001515  
F/ +91-40-27001515