



2016 Catalogue

 **major
science**

Innovative Life Sciences Tools

Stirring Water Bath

10L / 20L Stirring Water Bath

SWB series

The MS Stirring Water Bath series packed with built-in thermostatic baths is an innovative product line to provide precise temperature control and excellent mixing performance for a wide range of laboratory applications. The built-in stirring mechanism not only provides outstanding temperature uniformity, but also applies a stirring mixture function. The 10L or 20L stainless steel tank can operate flask(s) containing a moderate amount of solution simultaneously. Two single stirring mechanism models and two multi-stirring models are available for your preference.



Built-in magnetic stirring mechanism

Features

- Microprocessor control with digital performance for precise, accurate control
- Built-in magnetic stirring mechanism for water agitation, water temperature uniformity and medium solution mixing
- Stirring speed control
- LCD screen shows temperature and timer simultaneously
- User temperature calibration
- Safety device: warning indication on screen to avoid overheating and automatic shut down
- Multiple stirring mechanism capability
- Data Logging software available

SWB-10L



Max. capability: 6 sets of 250ml flasks
4 sets of 500ml flasks

SWB-20L



Max. capability: 15 sets of 250ml flasks
8 sets of 500ml flasks

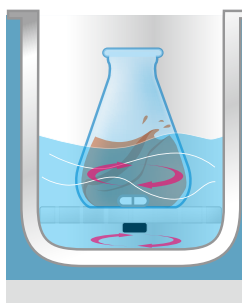




Concave lid design allows condensation flow back to the tank.



Side opening of the lid to allow minimum evaporation while maintaining water bath temperature.



Water circulation function

- Magnetic agitator
- Stir bar

Specifications

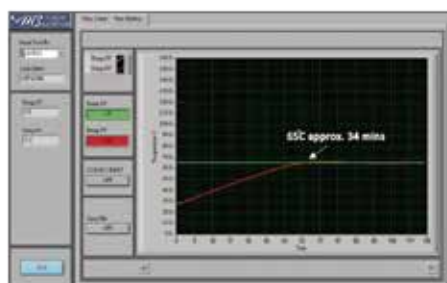
| Cat. No. | SWB-10L-1 | SWB-10L-2 | SWB-20L-1 | SWB-20L-3 |
|-------------------------------|---|-----------|--|-----------|
| Number of stirring mechanisms | 1 | 2 | 1 | 3 |
| Stirring speed | 400-1500rpm (measured by percentage) | | | |
| Bath capacity | Approx. 2.64gal (10L) | | Approx. 5.28gal (20L) | |
| Water circulation function | Yes | | | |
| Display | LCD | | | |
| Heating power | 600W | | 800W | |
| Controller | Digital microprocessor controller | | | |
| Bath temperature | 5 °C above ambient to 99 °C | | | |
| Temperature increment | 0.1°C | | | |
| Temperature accuracy | +/- 0.2 °C at 37 °C | | | |
| Temperature calibration | Yes | | | |
| Timer | 99 (hr): 59 (min) / Continuous | | | |
| Safety device | Warning indication on screen with alarm and automatic shut down | | | |
| Operating temperature | Ambient to 40 °C | | | |
| Bath Tank material | 304 stainless steel | | | |
| Bath Inner dimension (WxLxH) | 9.45"x11.81"x5.91" (240x300x150mm) | | 11.81"x19.69"x5.91" (300x500x150mm) | |
| Dimension (WxLxH) | 10.04"x13.98"x9.45" (255x355x240mm) (without lid) | | 12.99"x21.26"x9.45" (330x540x240mm) (without lid) | |
| Rear drainage port | N / A | | Yes | |
| Material | Painted iron metal | | | |
| Lid material | Polycarbonate with stainless steel handle | | | |
| Communication port | RS232 | | | |
| Weight | Approx. 19.8lb (9kg) | | Approx. 30.9lb (14kg) | |
| Rated voltage | 110V / 220V | | | |

Ordering Information

| Cat. No. | Product Description |
|---------------------|--|
| SWB-10L-1-110 / 220 | 10L Stirring Water Bath with 1 built-in stirring mechanism, lid included |
| SWB-10L-2-110 / 220 | 10L Stirring Water Bath with 2 built-in stirring mechanism, lid included |
| SWB-20L-1-110 / 220 | 20L Stirring Water Bath with 1 built-in stirring mechanism, lid included |
| SWB-20L-3-110 / 220 | 20L Stirring Water Bath with 3 built-in stirring mechanism, lid included |

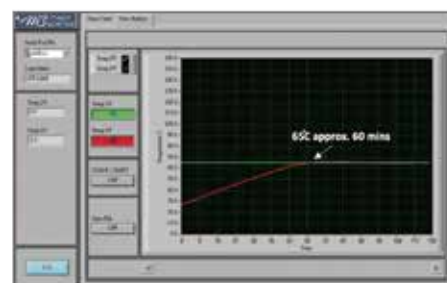
Accessories

| Cat. No. | Product Description |
|------------|---|
| SWB-LID10 | Transparent lid for 10L Stirring Water Bath |
| SWB-LID20 | Transparent lid for 20L Stirring Water Bath |
| SWB-RS232 | RS 232 cable for data logging |
| SWB-DLSW | Data Logging software package |
| SWB-DLSW-R | Data Logging software package, include a RS 232 cable |



SWB-10L series

■ Temp. set value : 65 °C
■ Initial temp. value : 17 °C
 Water volume : 5 liters
 Process time : Approx. 34mins



SWB-20L series

■ Temp. set value : 65 °C
■ Initial temp. value : 27 °C
 Water volume : 12 liters
 Process time : Approx. 60mins



US Office

19959 Sea Gull Way
Saratoga, CA 95070 U.S.A.
T/ +1-408-366-9866
F/ +1-408-446-1107

Taiwan Office

No. 37, Wuquan 5th Road, Wugu Dist.,
New Taipei City 24888, Taiwan
T/ +886-2-2298-1055
F/ +886-2-2299-7871

India Office

No.12-13-104, St. No.3, Lane No.1,
Tarnaka, Secunderabad - 500017
Telengana, India
T/ +91-40-27001515
F/ +91-40-27001515