

# 2016 Catalogue

 **major  
science**  
*Innovative Life Sciences Tools*

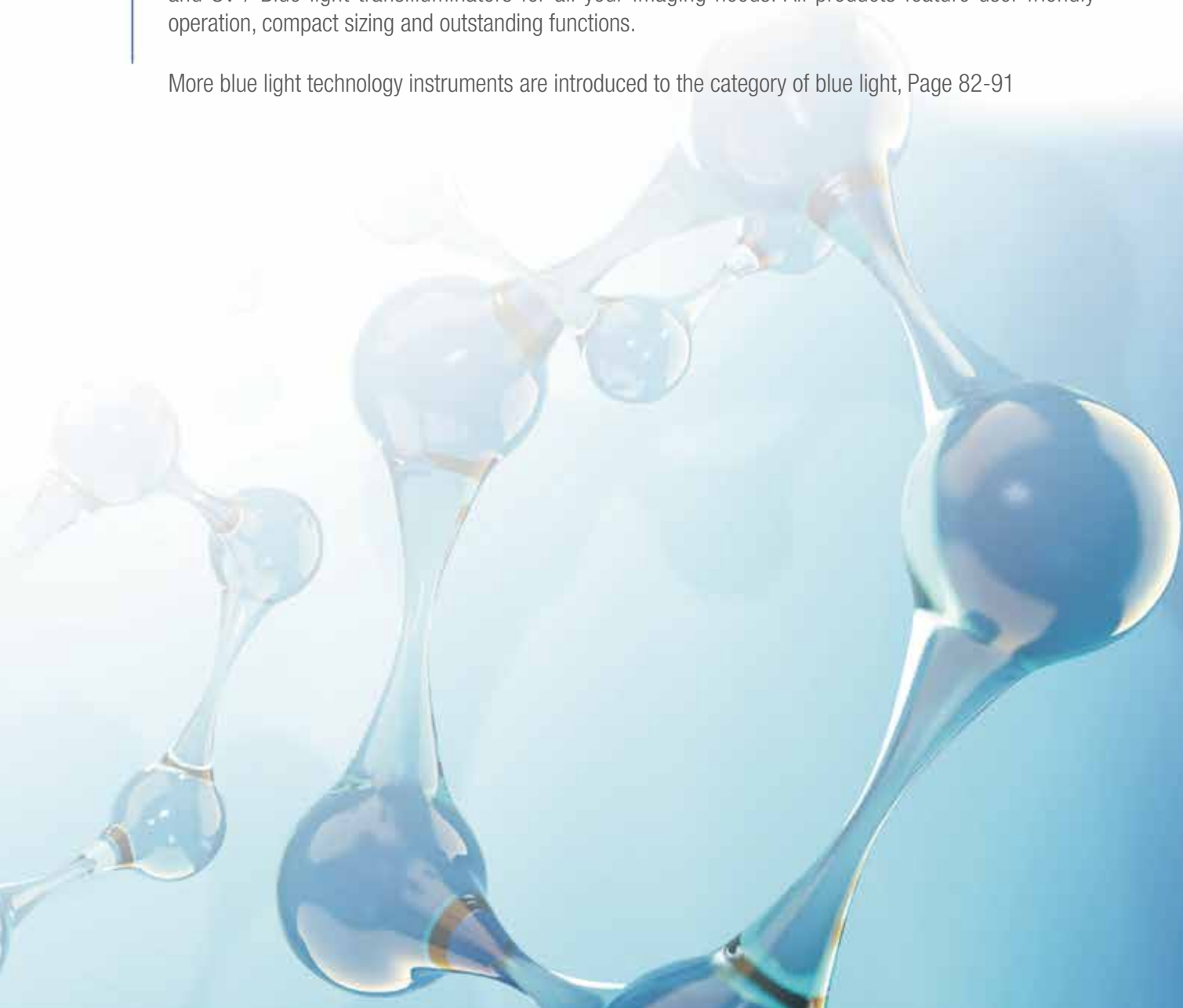
**Gel Documentation  
System**



# Gel Documentation System

Major Science offers a wide range of Gel Documentation System specifically designed to fit researchers' specifications and budgets. Gel Documentation System are offered for a wide range of applications depending on the system and camera configurations. This product line also includes UV Transilluminators and UV / Blue light transilluminators for all your imaging needs. All products feature user-friendly operation, compact sizing and outstanding functions.

More blue light technology instruments are introduced to the category of blue light, Page 82-91



# Gel Documentation System

## Imaging System

66-75

- ❖ SmartView Pro Imager
- ❖ SmartView Pro Imager, CCD
- ❖ SmartView Pro Imager, CMOS
- ❖ SmartView Simple Imager System
- ❖ Compact Digimage System
- ❖ Digimage System

## Transilluminator

76-79

- ❖ SmartView Transilluminator
- ❖ UV Transilluminator



\*All images are for reference only, actual products might differ from the images.

\*Please visit our website at [www.majorsci.com](http://www.majorsci.com) for more product selection and detailed information.

\*Technical specification subject to change without notice.

NEW

# SmartView Pro Imager

UVCI-2300 / UVCI-2400

MS UVCI-2300/2400, the truly standalone Gel Imaging System, delivers incredible image and sharpness with power of the exceptional close-up monochrome 2.0 mega-pixel CCD camera, and get you ready for beautifully discriminable DNA/Protein gel images in the spaciouly intuitive 10.4" interface with color touch-screen. Our innovative systems are expandable with white and blue light plates coupled with versatility of camera Filters, no matter it's an EtBr or EtBr-free operations, simply tab to view. Many post-imaging features like drawer-type platform and UV Protection Shield are added to your convenience for gel excision.



Control Interface

## Features

- Standalone gel doc system with high-quality monochrome CCD
- Exchangeable emission Filters provide for instant visualization
- Intuitive 10.4" interface with color touch-screen
- Zoom-able lens for proper picture size
- Movable platform for gel excision with UV-protection shield
- Automatic UV shut off mechanism (UVCI-2300 only)
- Optional trans white light and blue light plates (UVCI-2300 only)
- Exclusively designed for EtBr-free operation gel doc system (UVCI-2400 only)
- Optional trans white light plates

2.0 MP CCD Camera



UVCI-2300 / UVCI-2400

FC CE



System setup



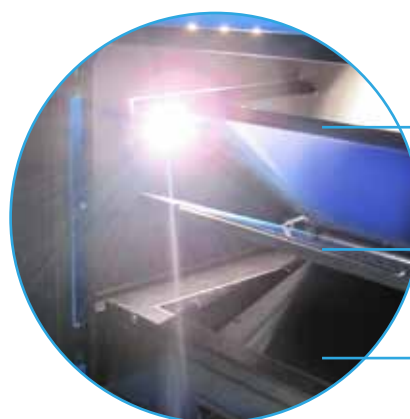
Default setting



UV light protection warning



Batch file management



White Light Plate  
(Flip type)

Blue Light Plate  
(Flip type)

UV Transilluminator  
(Drawer type)

Gel Documentation System



## Specifications

Model	SmartView Pro 2300	SmartView Pro 2400
Cat. No.	UVCI-2300	UVCI-2400
Camera	1/1.8" interline UXGA monochrome progressive 2.0MP CCD	
Pixels size	4.4µm x 4.4µm	
Lens (camera)	F1.2, 12.5 – 75mm (with one +1 close-up lens), 6X zoom lens, manual	
Camera video output	12bit	
Filter (camera)	Optical EtBr Filter / Optical SYBR Green Filter / Orange Amber Filter *Ordered Separately	Orange Amber Filter *Ordered Separately
Image storage	Built-in 14GB Memory (3000 tiff images storage) and USB flash	
Cabinet	Pull out, sliding transilluminator	
Field of view(WxL)	10.24"x8.26" (260x210mm)	
Dimension (WxLxH)	16.1"x15.9"x36" (410x405x915mm)	
Weight	Approx. 62.8lbs. (28.5kg)	Approx. 56lbs. (25.4kg)
Display	10.4" color touch screen, 800x600	
Viewing window	Built-in UV viewing window	Built-in blue viewing window
Window Filter	Amber Filter embedded in viewing window (580nm)	
Light source	Built-in drawer type UV Transilluminator 312(302)nm	Built-in drawer type blue transilluminator 470nm
Optional accessory	Epi white light	
	White Light Plate (power built-in)	
	Blue light plate (power built-in) 470nm	N/A
Saved image	Max. 16bit	
Grayscale	12bit, 0-4095 gray levels	
Safety	CE, FCC	
Rated voltage	100-240V~, 50/60Hz	



UVCI-2300-EB



UVCI-2300-SG



UVCI-2300-F4

## Ordering Information

Cat. No.	Product Description
UVCI-2300	SmartView Pro 2300 Imager System, UV light version
UVCI-2400	SmartView Pro 2400 Imager System, Blue light version

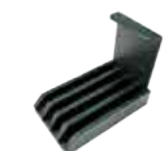
\* All filters have to be ordered separately.

## Accessories

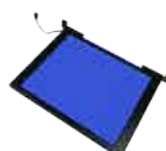
Cat. No.	Product Description
UVCI-2300-EB	SmartView EtBr Filter, 610nm (for UV)
UVCI-2300-SG	SmartView SYBR Green Filter, 520nm (for UV)
UVCI-2300-F4	SmartView Amber Filter, 580nm (for blue light)
UVCI-2313	SmartView Pro UV Protection Shield, for 2300 series
UVCI-2314	SmartView Pro Lens Filter Stand, can hold up to 4 lens filters, for 2300 & 2400 series
UVCI-2300-BL	Blue Light Plate for SmartView Pro 2300 series
UVCI-2300-WL	White Light Plate 21x26cm for SmartView Pro 2300 & 2400 series
MJC-8-STYLUS-00000	Stylus Pen



UVCI-2313



UVCI-2314



UVCI-2300-BL



UVCI-2300-WL



Viewing via window



Viewing via screen



Viewing window



MJC-8-STYLUS-00000



Blue Light Plate (UVCI-2300)



White Light Plate

NEW

# SmartView Pro Imager, CCD

## UVCI-2100

The SmartView Pro 2100 is simply the upgraded version of our 1000 series. The SmartView Pro 2100 offers all same great features except the 2.0 megapixel CCD camera to provide image with sharper sensitivity, and less exposure time. All the accessories are shared between 1000 series and 2000 so it's easy and simple to use. All great features such as pre-focused lens, safety UV door and 1D analysis software are all included as standard. Enjoy the most compact CCD imaging system for all of your laboratory work.



White Light Plate for protein analysis



Epi-blue light for optional light source

### Features

- High resolution CCD camera
- PC integration with real time image
- Capture/Analysis software included
- Pull out UV Transilluminator for easy gel cutting
- Easy installation, ready to use right out of the box
- Pre-focused lens allow one touch image capture
- Variety of optional accessories available
- UV safety cut-off switch when door is open
- CE and FCC certification

2.0 MP CCD Camera



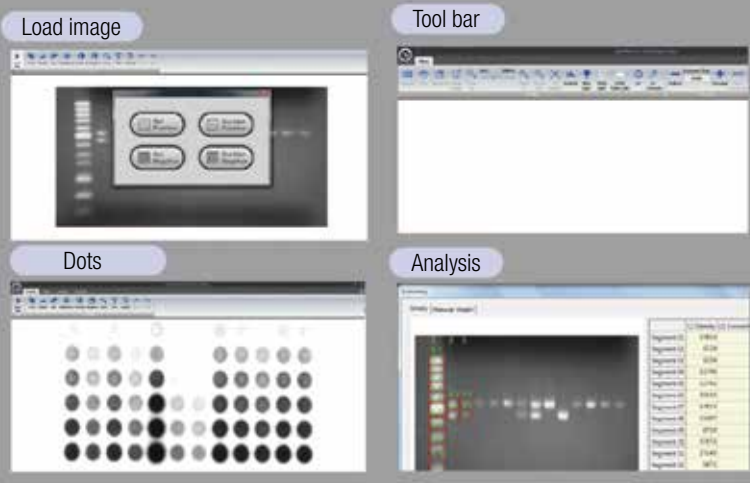
UVCI-2100



FC CE

### MS 1D Analysis Software(Cat. No. MBE-IMG-SW)

#### PC Version



\*PC is not included\*

## Specifications



UVCI-1000-WL



UVCI-1000-BL



UVCI-1000-EB



UVCI-1000-SG



MBE-IMG-F3



MBE-IMG-F4



UVCI-1003



UVCI-1004



MBE-G-Y1

Model	SmartView Pro 2100
Cat. No.	UVCI-2100
UV light	Built-in drawer type UV Transilluminator 312(302)nm
Camera	1/1.8" interline UXGA monochrome progressive 2.0MP CCD
Pixels size	4.4 $\mu$ m x 4.4 $\mu$ m
Lens (camera)	6mm, F1.2
Camera video output	12-bit
Filter (camera)	Optical EtBr Filter / Optical SYBR Green Filter / Yellow Amber Filter / Orange Amber Filter *Ordered separately
Image storage	PC
Software support	Window 10 / 8 / 7 (64bit & 32bit) / XP / Vista
Cabinet	Pull out, sliding transilluminator
Field of view (WxL)	10.24"x8.26" (260x210mm)
Dimension (WxLxH)	16.1"x15.9"x22.4" (410x405x570mm)
Weight	Approx. 54.0lbs. (24.5kg)
Display	LED indicator light
Viewing window	Built-in UV viewing window
Window Filter	Built-in Viewing Window Amber Filter 560nm
Light	White light (standard)
Optional accessory	White Light Plate (power built-in)
	Blue light (power built-in) 470nm
Safety	CE, FCC
PC connection	USB port
Wi-Fi format	N / A
1 D analysis software	Cat. No. MBE-IMG-SW included
Saved image	Max. 16bit

\* iPad and PC not included

## Ordering Information

Cat. No.	Product Description
UVCI-2100	SmartView Pro 2100 Imager System, standard version
UVCI-2101	SmartView Pro 2100 Imager System, standard version, high UV performance

\* All filters have to be ordered separately.

## Accessories

Cat. No.	Product Description
UVCI-1000-WL	White Light Plate for SmartView Pro Imager System, for 1000 & 2000 series
UVCI-1000-BL	Blue Light Module for SmartView Pro Imager System, for 1000 & 2000 series
UVCI-1000-EB	Optical EtBr Filter 620nm for SmartView Pro & Simple Imager System
UVCI-1000-SG	Optical SYBR Green Filter 520nm for SmartView Pro & Simple Imager System
UVCI-1000-F1	Viewing Window Amber Filter 560nm for SmartView Pro
MBE-IMG-F3	SmartView Amber Filter 560nm
MBE-IMG-F4	SmartView Amber Filter 580nm
UVCI-1001	Blue Light Module Package A, includes Blue Light Module and SmartView 560nm Amber Filter
UVCI-1002	Blue Light Module Package B, includes Blue Light Module and SmartView 580nm Amber Filter
UVCI-1003	SmartView Pro UV Protection Shield, for 1000 & 2000 series
UVCI-1004	SmartView Pro Lens Filter stand, for 1000 & 2000 series
MBE-G-Y1	Amber Filter Glasses (optional)



Easy installed by magnetic design



UV Protection Shield



Easily gel cutting design with UV



Up to 4 Filters



Easily placed by magnet near camera



Viewing window

# SmartView Pro Imager, CMOS

## UVCI-1000 series

The SmartView Pro Imager System provides two different models for you to choose. The SmartView Pro 1100 provides the basic feature and standard operation whereas the SmartView Pro 1200 provides the Wi-Fi feature compatibility with tablets( iPad, OS, Android, Windows ).



UVCI-1100

UVCI-1200



UVCI-1200 LCD touch screen

### Features

- High resolution 5.0 megapixel monochrome camera
- PC integration with real time Image
- Capture/Analysis software included
- Pull out UV Transilluminator for easy gel cutting
- Easy installation, ready to use right out of the box
- Pre-focused lens allow one touch image capture
- Variety of optional accessories available
- UV safety cut-off switch when door is open
- Wireless module for cable free environment (Wi-Fi version only)
- CE and FCC certification

### 5.0 MP Monochrome Camera



UVCI-1200



Wi-Fi connection  
for wire-free lab  
environment

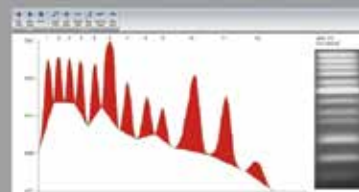
### MS 1D Analysis Software(Cat. No. MBE-IMG-SW)

#### PC Version

##### Load image



##### Quantify



##### Define region



##### Analysis



#### iPad Version



\*PC is not included\*





UVCI-1000-WL



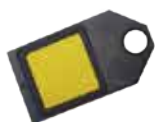
UVCI-1000-BL



UVCI-1000-EB



UVCI-1000-SG



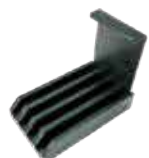
MBE-IMG-F3



MBE-IMG-F4



UVCI-1003



UVCI-1004



MBE-G-Y1

## Specifications

Model	SmartView Pro 1100 (Standard version)	SmartView Pro 1200 (Wi-Fi version)
Cat. No.	UVCI-1100	UVCI-1200
UV light	312(302)nm	
Camera	(2592x1944) , 10bit scientific grade sensor 5.0MP	
Pixels size	2.2 $\mu$ m x 2.2 $\mu$ m	
Lens (camera)	6mm, F1.2	
Camera video output	12-bit	
Filter (camera)	Optical EtBr Filter / Optical SYBR Green Filter / Yellow Amber Filter / Orange Amber Filter *Ordered separately	
Image storage	PC	Portable device (iOS or android) and PC
Connection	USB to PC	Wi-Fi to portable device and PC
Software support	Window 10 / 8 / 7 (64 & 32bit) / XP / Vista	Windows 10 / 8 / 7/(64 & 32bit)/XP/Vista, Tablets
Cabinet	Pull out, sliding transilluminator	
Field of view (WxL)	10.24"x8.26" (260x210mm)	
Dimension (WxLxH)	16.1"x15.9"x22.4" (410x405x570mm)	
Weight	Approx. 54.0lbs. (24.5kg)	
Display	LED	LCD
Viewing window	For gel observation	
Window Filter	Amber Filter (standard) 560nm	
Light	White light (standard)	
Optional accessory	White Light Plate (power built-in)	
	Blue light (power built-in) 470nm	
Safety	CE, FCC	
USB port	for PC connection	For maintenance purpose only
1 D analysis software	Cat. No. MBE-IMG-SW included	

\* iPad and PC not included

## Ordering Information

Cat. No.	Product Description
UVCI-1100	SmartView Pro 1100 Imager System, standard version
UVCI-1200	SmartView Pro 1200 Imager System, wifi version
UVCI-1101	SmartView Pro 1100 Imager System, standard version, high UV performance
UVCI-1201	SmartView Pro 1200 Imager System, wifi version, high UV performance

\* All filters have to be ordered separately.

## Accessories

Cat. No.	Product Description
UVCI-1000-WL	White Light Plate for SmartView Pro Imager System, for 1000 & 2000 series
UVCI-1000-BL	Blue Light Module for SmartView Pro Imager System, for 1000 & 2000 series
UVCI-1000-EB	Optical EtBr Filter 620nm for SmartView Pro & Simple Imager System
UVCI-1000-SG	Optical SYBR Green Filter 520nm for SmartView Pro & Simple Imager System
MBE-IMG-F3	SmartView Amber Filter 560nm
MBE-IMG-F4	SmartView Amber Filter 580nm
UVCI-1003	SmartView Pro UV Protection Shield, for 1000 & 2000 series
UVCI-1004	SmartView Pro Lens Filter Stand, for 1000 & 2000 series
MBE-G-Y1	Amber Filter Viewing Glasses (optional)



Sliding  
transilluminator



Easy installed  
by magnetic  
design



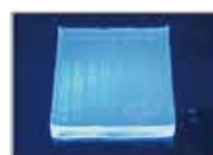
Easily gel  
cutting  
design  
with UV



Up to 4 Filters



Easily placed  
by magnetic  
near camera



Optional  
blue light  
device

# SmartView Simple Imager System

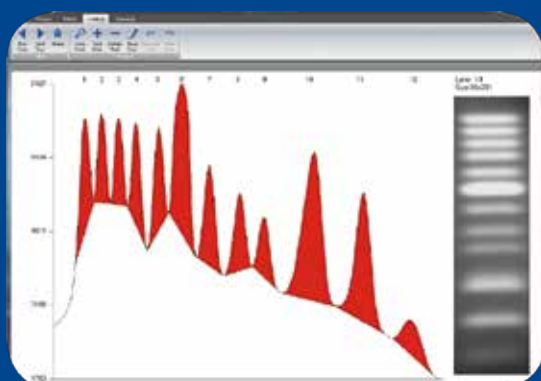
## MUV-IMG series

Major Science offers SmartView Simple Imager System for your UV or blue light Transilluminator. This unit is designed for extremely light in weight and compact in size.

For any lab with limited budget and lab space, the SmartView Simple Imager System is definitely your top choice of selection. It is compatible with most of the transilluminators on the market. (for any maximum viewing size less than 260x210mm)

The system comes with two models for your selection.

Digital camera model gives your mobility and Scientific camera gives you Image capture and analysis capability right from your computer.



Gel image analysis software included for SmartView Simple (MUV-IMG-CM)

### Features

- Extremely light weight and compact in size
- 12.1 megapixel digital camera and 5.0 megapixel scientific grade camera for selection
- PC required for scientific grade camera model (image capture software included)
- Optical amber Filter special designed for blue light viewing (560nm or 580nm)
- Optical Filters available upon ordering (for EtBr or SYBR)
- Gel capture/Analysis software included FREE of charge (when purchasing with 320 Imager System)



Wi-Fi function

MUV-IMG-CA



MUV-IMG-CM



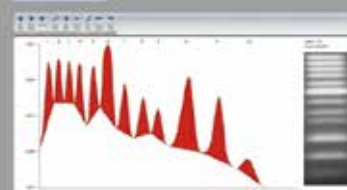
## MS 1D Analysis Software(Cat. No. MBE-IMG-SW)

### PC Version

#### Load image



#### Quantify



#### Tool bar



#### Analysis



\*PC is not included\*



MUV-IMG-CA-01



MUV-IMG-CM-01



MBE-IMG-CM-03



UVCI-1000-EB



UVCI-1000-SG



MBE-IMG-F3



MBE-IMG-F4



MBE-201

## Specifications

Model	MUV-IMG-CA (SmartView simple 310)	MUV-IMG-CM (SmartView simple 320)
Camera	12.1MP digital camera , Wi-Fi function	5.0MP ,10bit scientific grade camera
Special features	Camera with built-in Wi-Fi	Analysis software included
Aperture	f/1.8(W) - f/2.8(T)	6mm, max. f/1.2
Shutter speed	15 - 1/4000 sec.	30 - 0.01 sec.
Storage media	SD memory card, Wi-Fi to PC	PC
Dimension (WxLxH)	9.29"x12.48"x16.38" (236x317x416mm)	
Weight	Approx. 3.1lbs. ( 1.4kg)	
Max. viewing size	10.24"x8.27" (260x210mm)	
Filter (camera)	Optical EtBr Filter and SYBR Green Filter *Ordered separately	
Software support	N / A	Windows 10 / 8 / 7/(64 & 32bit)/XP/Vista
1 D analysis software	N / A	Cat. No. MEB-IMG-SW included

## Ordering Information

Cat. No.	Product Description
MUV-IMG-CA	SmartView Simple 310 Imager System, with 12.1MP digital camera with built-in Wi-Fi
MUV-IMG-CM	SmartView Simple 320 Imager System, with 5.0MP scientific grade camera
MUV-IMG-CA-01	SmartView 310 holder kit, includes hood and camera adaptor
MUV-IMG-CM-01	SmartView 320 holder kit, includes hood and camera adaptor
MBE-IMG-CM-03	5.0MP scientific grade camera, lens and USB cable

\* All filters have to be ordered separately.

MUV-IMG-CA is offered as a complete system for the user to perform image capture, including:

- 1 x digital camera
- 1 x lens adaptor
- 1 x memory card



LENS-01



## Accessories

Cat. No.	Product Description
UVCI-1000-EB	Optical EtBr Filter (620nm) for SmartView Pro & Simple Imager System
UVCI-1000-SG	Optical SYBR Green Filter (520nm) for SmartView Pro & Simple Imager System
MBE-IMG-F3	SmartView Amber Filter, 560nm
MBE-IMG-F4	SmartView Amber Filter, 580nm
MBE-201	Rubber Flap

## Bundle Packages

Cat. No.	Product Description
MUV21-CP-02	Complete package of MUV21-312 Transilluminator and SmartView simple 310 Imager System
MUV21-CP-03	Complete package of MUV21-312 Transilluminator and SmartView simple 320 Imager System
MUV26-CP-02	Complete package of MUV26-312 Transilluminator and SmartView simple 310 Imager System
MUV26-CP-03	Complete package of MUV26-312 Transilluminator and SmartView simple 320 Imager System
MUVB-111-CP-02	Complete package of SmartView 111 Transilluminator and SmartView simple 310 Imager System
MUVB-111-CP-03	Complete package of SmartView 111 Transilluminator and SmartView simple 320 Imager System



MUV21-CP-02 /  
MUV26-CP-02



MUV21-CP-03 /  
MUV26-CP-03



MUVB-111-CP-02



MUVB-111-CP-03

# Compact Digimage System

## UVDI series

The Compact Digimage System is a complete and compact gel documentation system with a digital control panel. The system uses a digital camera for image capture. The system is equipped with a built-in UV Transilluminator and a large 8" TFT colorful screen for gel observation. Its side access design provides a safe and convenient way for the user to recover agarose gel bands. For a low budget and limited space, the Compact Digimage System can be operated without a computer. A variety of images can be captured including: agarose and other fluorescent gels, colorimetric gels, autoradiography film, and blotting membrane. A safety switch is equipped to turn off the UV Transilluminator automatically when the front door is opened. Files can be saved in a variety of formats, including RAW format, for transfer to a computer for storage and analysis. The Digimage System can also directly connect to any BNC thermal printer for printing the result immediately.



High resolution 8" TFT screen

### Features

- 12.1 megapixel digital camera
- High resolution 8" TFT screen
- Digital control panel
- Compact chamber and lightweight
- Multi focus area selection
- Built-in UV Transilluminator
- Can be operated computer free
- Connect port for thermal printer
- Inner 2x3 W white light LED
- Safety door switch
- Multi power source
- Optional gel analysis software package available
- Universal rated voltage: 100-240V

UVDI series



UVDI-CB series



UVDI series is offered as a complete system for the user to perform image capture, including:

- 1 x Compact Digimage System chamber
- 1 x digital camera
- 1 x DC coupler
- 1 x lens adaptor
- 1 x 8" color TFT screen
- 1 x memory card
- 1 x memory card reader
- 1 x built-in UV transilluminator



\*PC is not included\*





Viewing window



Convenient access



Digital control panel

## Specifications

Camera	
Type	5 x optical / 4 x digital zoom digital camera
Effective pixels	Approx. 12.1 megapixels
Sensor	1/1.7" high-sensitivity CMOS
Maximum aperture	f/1.8 (W) - f/2.8 (T)
Shutter speed	15 - 1/4000 sec.
Filter	+3 close up Filter (Standard) and EtBr or SYBR Green Filter(optional)
Storage media	SD memory card
Computer interface	USB 2.0 Hi-speed (mini-B jack)
Video out	NTSC / PAL

UV Transilluminator	
Wavelength	254 / 312 (302) / 365nm
Filter size	8.27"x8.27" (210x210mm)
Light source	6 tubes, 8W/tube
Filter	Long life Filter
Intensity switch	High (100%) / Low (70%) Intensity switch (Single wavelength mode only)

Darkroom	
Multi-power source	For camera, inner white LED, TFT screen
Inner white light	2 white LED, 3W/LED
Safety device	Safety door switch
Side access	For cutting gels
Dimension (WxLxH)	13.19"x21.26"x18.50" (335x540x470mm)
Chamber material	Painted metal
Rated voltage	110V - 220V
Weight	Approx. 44.0lb (20.0kg)

8" TFT Screen	
Type	8" TFT crystal screen
Resolution	800x600 pixels
Brightness	350cd / m2
Constant ratio	300 : 1
Display mode	NTSC / PAL / SECAM mode auto switching

## Ordering Information

Cat. No.	Product Description
UVDI-254	Compact Digimage System with 12.1MP digital camera and built-in 254nm UV Transilluminator
UVDI-312	Compact Digimage System with 12.1MP digital camera and built-in 312 (302)nm UV Transilluminator
UVDI-365	Compact Digimage System with 12.1MP digital camera and built-in 365nm UV Transilluminator
UVDI-254/365	Compact Digimage System with 12.1MP digital camera and built-in 254 & 365nm UV Transilluminator
UVDI-254/312	Compact Digimage System with 12.1MP digital camera and built-in 254 & 312 (302)nm UV Transilluminator
UVDI-CB-254	Compact Digimage System with 12.1MP digital camera and built-in 254nm UV Transilluminator, w/o digital camera
UVDI-CB-312	Compact Digimage System with 12.1MP digital camera and built-in 312 (302)nm UV Transilluminator, w/o digital camera
UVDI-CB-365	Compact Digimage System with 12.1MP digital camera and built-in 365nm UV Transilluminator, w/o digital camera
UVDI-CB-254/365	Compact Digimage System with 12.1MP digital camera and built-in 254 & 365nm UV Transilluminator, w/o digital camera
UVDI-CB-254/312	Compact Digimage System with 12.1MP digital camera and built-in 254 & 312 (302)nm UV Transilluminator, w/o digital camera

\*UVDI-CB series excludes 12.1 megapixel digital camera, DC coupler, 2GB memory card and memory card reader.

\* All filters have to be ordered separately.

## Accessories

Cat. No.	Product Description
DI-CLEB	Close up lens and EtBr Filter for Compact Digimage System
DI-CLSG	Close up lens and SYBR Green Filter for Compact Digimage System
DI-CL	Close up lens for Compact Digimage System
DI-EB58-1	EtBr Filter for Compact Digimage System
DI-SG58-1	SYBR Green Filter for Compact Digimage System
DI-DR-80	DC coupler
DI-WLA3-110/220	White Light Plate 297x400mm (110 / 220V)
DI-WLA4-110/220	White Light Plate 210x297mm (110 / 220V)
DI-WLA6-110/220	White Light Plate 105x150mm (110 / 220V)
DI-UNSCAN-IT	Basic gel analysis software package
MUV-T254	8W 254nm UV lamp
MUV-T312	8W 312 (302)nm UV lamp
MUV-T365	8W 365nm UV lamp
MUV-F21-254/365	21x21cm Filter for built-in 254/365nm UV Transilluminator (with stainless steel frame)
MUV-F21-312	21x21cm Filter for built-in 312(302)nm UV Transilluminator (with stainless steel frame)

# Digimage System

## DI-01

The Digimage System is a simple, compact gel documentation system with a rear digital control panel. It contains the Canon powershot G16, a digital camera with a superb resolution of 12.1 megapixels. The image is viewed from a large 8" TFT colorful screen with monitor purpose only. For a lab with limited space and low budget requirements, the Digimage System is definitely your top choice since it's computer-free operation. A variety of images can be captured including: agarose and other fluorescent gels, colorimetric gels, auto radiography film, and blotting membrane. A safety switch is equipped to turn off the UV Transilluminator automatically when the front door is opened. Files can be saved in a variety of formats, including RAW format, for transfer to a computer for storage and analysis. The Digimage System can also directly connect to any BNC thermal printer for printing the result immediately.



High resolution 8" TFT screen

### Features

- 12.1 megapixel digital camera
- High resolution 8" TFT screen
- Digital control panel
- Compact chamber and lightweight
- Multi focus area selection
- Built-in UV Transilluminator
- Can be operated computer free
- Connect port for thermal printer
- Inner 2x3 W white light LED
- Safety door switch
- Multi power source
- Optional gel analysis software package available
- Universal rated voltage: 100-240V



DI-HD

DI-01

DI-01



DI-01 is offered as a complete system for the user to perform image capture, including:

- 1 x Digimage System hood
- 1 x digital camera
- 1 x DC coupler
- 1 x lens adaptor
- 1 x 8" color TFT screen
- 1 x memory card
- 1 x memory card reader



\*PC is not included\*



MUV21-CP-01/  
MUV26-CP-01



MUVB-111-CP-01

## Specifications

Camera	
Type	5 x optical / 4 x digital zoom digital camera with built-in Wi-Fi
Effective pixels	Approx. 12.1 megapixels
CCD	1/1.7" high-density CCD; total pixels 15.0 million
Maximum aperture	f/1.8 (W) - f/2.8 (T)
Shutter speed	15 - 1/4000 sec.
Filter	+3 close up Filter (Standard) EtBr or SYBR Green Filter(optional)
Storage media	SD memory card
Computer interface	USB 2.0 Hi-speed (mini-B jack) or Wi-Fi connection
Video out	NTSC / PAL
Darkroom	
Multi-power source	For camera, inner white LED, TFT screen
Inner white light	2 white LED, 3W/LED
Safety device	Safety door switch
Dimension (WxLxH)	11.41"x8.66"x12.60" (290x220x320mm)
Rated voltage	110V - 240V
Weight	Approx. 13.4lb (6.1kg)
8" TFT Screen	
Type	8" TFT crystal screen
Resolution	800x600 pixels
Brightness	350cd / m <sup>2</sup>
Constant ratio	300 : 1
Display mode	NTSC / PAL / SECAM mode auto switching

## Ordering Information

Cat. No.	Product Description
DI-01	Digimage System with 12.1 megapixels digital camera
DI-HD	Digimage System hood without digital camera

\*DI-HD excludes 12.1 megapixel digital camera, DC coupler, memory card and memory card reader

\* All filters have to be ordered separately.

## Accessories

Cat. No.	Product Description
DI-CLEB	Close up lens and EtBr Filter for Digimage System
DI-CLSG	Close up lens and SYBR Green Filter for Digimage System
DI-CL	Close up lens for Digimage System
DI-EB58-1	EtBr Filter for Digimage System
DI-SG58-1	SYBR Green Filter for Digimage System
DI-DR80	DC coupler
DI-WLA3-110/220	White Light Plate 297x400mm (110 / 220V)
DI-WLA4-110/220	White Light Plate 200x300mm (110 / 220V)
DI-WLA6-110/220	White Light Plate 105x150mm (110 / 220V)
DI-UNSCAN-IT	Basic gel analysis software package



DI-WLA3 (297x400mm)  
DI-WLA4 (210x297mm)  
DI-WLA5 (105x150mm)

## Bundle Package

Cat. No.	Product Description
MUV21-CP-01	Complete package of MUV21-312 Transilluminator and Digimage System
MUV26-CP-01	Complete package of MUV26-312 Transilluminator and Digimage System
MUVB-111-CP-01	Complete package of SmartView 111 Transilluminator and Digimage System

# SmartView Transilluminator

## MUVB-100 series

SmartView Transilluminator is the next generation of the illuminator for your lab. Combining the blue light and UV light, this equipment allows you to work either using blue light or UV light with your samples.

The Epi-Blue light proportionally emits your sample to give excellent fluorescence for you to view the nucleic acid bands. As the single or dual wavelength UV light allows you to induce stronger signals.

Moreover, since blue light is within visible light spectrum, it simply provides just enough energy to induce the signals without endangering operator' safety.

In addition, this two-in-one system provides you additional convenience to work on any of your sample with UV light with or blue light simultaneously without moving your gel back and forth. SmartView Transilluminator is the ultimate source for any of your lab practice.



Built-in blue LED module provides flexibility in DNA stain selection

### Features

- Built-in blue light LED module with UV light
- Single or dual wavelength models available for different application purposes
- Adjustable UV protection cover for better viewing angle efficiency
- Industrial leading long life UV Filter
- Fast start up without flickering to instantaneously illuminate tubes
- High/Low intensity switch to minimize DNA degradation
- High efficiency reflector provides optimum use of UV light



MUVB-100



## Dye Application Guide

Cat. No.	UV Light	Blue Light
SYBR® green I (DNA)	✓	✓✓
SYBR® green II (RNA)	✓	✓✓
SYBR® Gold	✓	✓✓
Midori green direct	✓	✓✓
Hydra green™ safe DNA dye	✓	✓✓
HD green™ DNA stain	✓	✓✓
Novel juice	✓	✓✓
SafeView DNA stain	✓✓	✓✓
SYBR® safe	✓	✓✓
Midori green	✓	✓✓
Midori green advanced	✓	✓✓
Gelgreen™	✓	✓✓
GelRed™	✓✓	✓
Ethidium bromide	✓✓	
Serva DNA stain clear G	✓✓	
HealthView™	✓✓	

✓✓ Excellent

✓ Good

## Specifications

Model	Cat. No.	Type	Wavelength	UV Light Source (1tube / 8W)
SmartView 111	MUVB-111	Single	312(302)nm	5 tubes
SmartView 112	MUVB-112	Single	254nm	5 tubes
SmartView 113	MUVB-113	Single	365nm	5 tubes
SmartView 114	MUVB-114	Single	312(302)nm (high performance)	5 tubes
SmartView 121	MUVB-121	Dual	254nm / 312(302)nm	4 tubes / 5 tubes
SmartView 122	MUVB-122	Dual	254nm / 365nm	5 tubes / 4 tubes
SmartView 123	MUVB-123	Dual	254nm / 312(302)nm (high performance)	4 tubes / 5 tubes

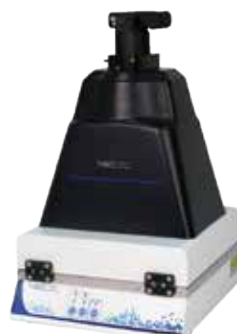




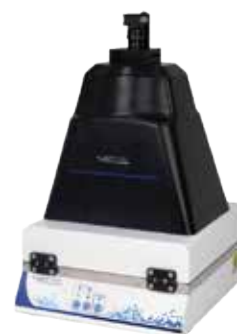
MBE-G-Y1



MUVB-111-CP-01



MUVB-111-CP-02



MUVB-111-CP-03

## Specifications

Model	SmartView
Filter size	(WxL) 21 x 21 cm
Intensity switch	High (100%) / Low (70%) intensity switch for single wavelength model
Fast response	High quality starter to light up the tubes instantaneously and cause no blinking
Blue light source	1W x 18 lamps
UV resistance plastic cover	(WxL) 225x260 mm (Transparent)
Blue light resistance plastic cover	(WxL) 225x260 mm (Orange)
Dimension	(WxLxH) 340x286x176 mm
Rated voltage	100-230V~, 50/60Hz, 2A
Weight	Approx. 11.2kg

## Ordering Information

Cat. No.	Product Description
MUVB-111	SmartView 111 Transilluminator with blue light and built-in UV, single wavelength 312(302)nm
MUVB-112	SmartView 112 Transilluminator with blue light and built-in UV, single wavelength 254 nm
MUVB-113	SmartView 113 Transilluminator with blue light and built-in UV, single wavelength 365 nm
MUVB-114	SmartView 114 Transilluminator with blue light and built-in UV, single wavelength 312(302) nm, high performance
MUVB-121	SmartView 121 Transilluminator with blue light and built-in UV, dual wavelength 254/312(302)nm
MUVB-122	SmartView 122 Transilluminator with blue light and built-in UV, dual wavelength 254/365nm
MUVB-123	SmartView 123 Transilluminator with blue light and built-in UV, dual wavelength 254/312 (302)nm, high performance

\* For different single wavelength models. please consult with your regional manager.

\* All filters have to be ordered separately.

## Accessories

Cat. No.	Product Description
MBE-G-Y1	Amber Filter Viewing Glasses (optional)

## Bundle Packages

Cat. No.	Product Description
MUVB-111-CP-01	Complete package of SmartView 111 Transilluminator and Digimage System
MUVB-111-CP-02	Complete package of SmartView 111 Transilluminator and SmartView Simple 310 Imager System
MUVB-111-CP-03	Complete package of SmartView 111 Transilluminator and SmartView Simple 320 Imager System
MUVB-114-CP-01	Complete package of SmartView 114 Transilluminator and Digimage System
MUVB-114-CP-02	Complete package of SmartView 114 Transilluminator and SmartView Simple 310 Imager System
MUVB-114-CP-03	Complete package of SmartView 114 Transilluminator and SmartView Simple 320 Imager System



UV light applied



Blue light applied



Removable amber Filter

# UV

## Transilluminator

### MUV series

The bench-top UV Transilluminator series offers the researcher uniform and intense sources of ultraviolet light (radiation) with a compact footprint. Their special design emits either one or dual intensity excitation UV wavelengths for back-illumination of transparent fluorescent materials. 254nm, 312 (302)nm, 365nm, 254 & 365nm, and 254 & 312 (302)nm modes are available for different applications. There are two choices of Filter size viewing dimensions, 26x21cm and 21x21cm for different user requirements. The 365nm mode is offered for easily viewing gels under long wave for extended periods of time avoiding photo nicking damage. The 254nm mode is used to irradiate samples. The 312 (302)nm mode is suggested for general gel operating. The single wavelength modes have a high intensity / low intensity switch equipped. All bench-top transilluminator modes are compact, lightweight and economical.

Now a high performance model, 312 (302)nm UV Transilluminator with a strong lighting and longer life time tubes, was introduced for the requirement.



Adjustable UV protection cover

#### Features

- 254nm or 312 (302)nm or 365nm or 254/365nm or 254/312 (302)nm modes available
- 26x21cm or 21x21cm view dimension
- High intensity / low intensity switch for single wavelength model
- Adjustable UV protection cover for better viewing angle efficiency
- High performance models available
- Long life time Filter



MUV-21 series



MUV-26 series



## Specification

Model	MUV26 series	MUV21 series
Wavelength	254 / 312 (302) / 365nm	
Filter size	10.24"x8.27" (260x210mm)	8.27"x8.27" (210x210mm)
Light source	6 tubes, 8W/tube	
Filter	Long life Filter	
	High efficiency reflector	
Intensity switch	High (100%)/Low (70%) intensity switch for single wavelength mode	
Fast start up	New high quality starter to simultaneously illuminate tubes, when switched on and no blink	
UV resistant plastic cover	(WxL) 12.99"x9.84" (330x250mm)	
Dimension (WxLxH)	13.39"x11.61"x3.94" (340x295x100mm)	
Weight	Approx. 16.5lb (7.5kg)	
Rated voltage	110V/220V	

## Ordering Information

Cat. No.	Product Description
MUV21-254	21x21cm Transilluminator for 254nm
MUV21-312	21x21cm Transilluminator for 312 (302)nm
MUV21-312H	21x21cm Transilluminator for 312 (302)nm, high performance
MUV21-365	21x21cm Transilluminator for 365nm
MUV21-254/365	21x21cm Transilluminator for 254 and 365nm
MUV21-254/312	21x21cm Transilluminator for 254 and 312 (302)nm
MUV21-254/312H	21x21cm Transilluminator for 254 and 312 (302)nm, high performance
MUV26-254	26x21cm Transilluminator for 254nm
MUV26-312	26x21cm Transilluminator for 312 (302)nm
MUV26-312H	26x21cm Transilluminator for 312 (302)nm, high performance
MUV26-365	26x21cm Transilluminator for 365nm
MUV26-254/365	26x21cm Transilluminator for 254 and 365nm
MUV26-254/312	26x21cm Transilluminator for 254 and 312 (302)nm
MUV26-254/312H	26x21cm Transilluminator for 254 and 312 (302)nm, high performance

## Bundle Packages

Cat. No.	Product Description
MUV21-CP-01	Complete package of MUV21-312 Transilluminator and Digimage System
MUV21-CP-02	Complete package of MUV21-312 Transilluminator and SmartView simple 310 Imager System
MUV21-CP-03	Complete package of MUV21-312 Transilluminator and SmartView simple 320 Imager System
MUV26-CP-01	Complete package of MUV26-312 Transilluminator and Digimage System
MUV26-CP-02	Complete package of MUV26-312 Transilluminator and SmartView simple 310 Imager System
MUV26-CP-03	Complete package of MUV26-312 Transilluminator and SmartView simple 320 Imager System



MUV21-CP-01/ MUV26-CP-01



MUV21-CP-02/ MUV26-CP-02



MUV21-CP-03/ MUV26-CP-03





### **US Office**

19959 Sea Gull Way  
Saratoga, CA 95070 U.S.A.  
T/ +1-408-366-9866  
F/ +1-408-446-1107

### **Taiwan Office**

No. 37, Wuquan 5th Road, Wugu Dist.,  
New Taipei City 24888, Taiwan  
T/ +886-2-2298-1055  
F/ +886-2-2299-7871

### **India Office**

No.12-13-104, St. No.3, Lane No.1,  
Tarnaka, Secunderabad - 500017  
Telengana, India  
T/ +91-40-27001515  
F/ +91-40-27001515